

S8901-54XC

Data Center ToR Switch

Next-generation cloud service applications not only generate more data but also require service providers to build more flexible, agile, and scalable networks to meet growing customer demands. The S8901-54XC is a white-box data center switch with open networking capabilities.

This high-performance switch offers a comprehensive set of features, multi-protocol support, and run-time programmability, ensuring optimal performance in even the most demanding environments.

With its compact form factor and high-density configurations, the S8901-54XC can serve as a Top-of-Rack (ToR) or leaf switch, providing versatile connectivity and traffic management.

KEY BENEFITS

- Monitoring link status to re-assign traffic flow dynamically
- Optimization for the east-west traffic pattern
- Flexible and efficient data processing
- Centralize and adaptive packet memory management architecture
- On-chip packet buffers minimize the data latency
- Dynamic load balancing enhances ECMP
- Enhanced network telemetry with programmable support
- Enable real-time network status visibility
- Versatile connectivity as a data center leaf or ToR.



KEY FEATURES

- High density 48 x 25G + 6 x 100G service interfaces
- 2.0Tbps switching capacity
- Intel® Denverton 4-Cores
- Broadcom Trident3-X5 Silicon
- Individual BMC for monitoring and managing equipment health status
- Hot swappable power supplies with 1+1 redundancy support
- Hot swappable fan modules with 4+1 redundancy support

SPECIFICATIONS

PHYSICAL

♦ 6 x 40/100G QSFP28 ports	
♦ 48 x 1/10/25G SFP28 ports	
♦ 1 x 100/1000M RJ45 management port	
♦ 1 x RJ45 serial console port	
♦ 1 x USB 3.0 Type-A port	
Processor	Intel Denverton 4-Core @ 1.6GHz
Memory	8GB DDR4 (Up to 32GB)
Storage	32GB SSD
ASIC	Broadcom Trident3-X5 BCM56770
BMC	AST2620
LED	Power and System status LEDs per unit Link and Activity LEDs per port FAN Status LED per FAN PSU Status LED per PSU
Chassis (WxDxH)	1RU, 440 x 440 x 43.8 mm or 17.32" x 17.32" x 1.72" Weight: 8.7kg or 19.18lbs
Redundancy	Hot swappable, 1+1 redundant PSU Hot swappable, 4+1 redundant Fans

S8901-54XC

Cloud & Data Center Solutions

ENVIRONMENTAL

Power Specs.	AC input: 100 to 240V, 6A DC input: -36 to -75V, 16A Typical power: 120 Watts (no transceiver)
Max. Operating Specs.	Operating temperature: 0°C to 45°C (32°F to 113°F) Operating humidity: 5% to 95% (RH), non-condensing
Max. Non-Operating Specs.	Storage temperature: -40°C to 70°C (-40°F to 158°F) Storage humidity: 5% to 95% (RH), non-condensing

PERFORMANCE

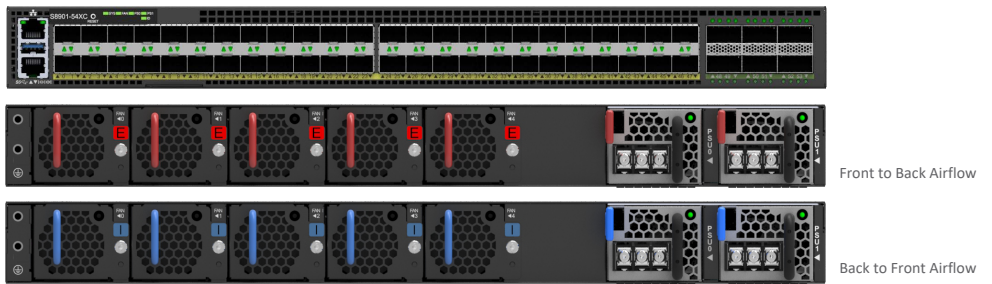
Switching Capacity	2.0 Tbps
Packet Buffer	32 MB

REGULATORY COMPLIANCE

Safety	UL 62368-1 IEC 62368-1	EMC	FCC Part 15, Subpart B, Class A ICES-003, Class A EN 55032, Class A EN 300 386 EN 55035 VCCI CISPR 32, Class A
Environment	WEEE		

Specifications are subject to change without notice.
Contact our sales team for current configuration options.

S8901-54XC Front and Back Views



ACCESSORIES

Compatible Transceivers Types
25G SFP28 SR, 25G SFP28 LR, 25G SFP28 ER, 100G QSFP28 SR, 100G QSFP28 LR, 100G QSFP28 ER

Available to Order
Power Supply Types
PSU-401-DESR, 400W DC, exhaust air flow
PSU-401-DISB-1, 400W DC, intake air flow
PSU-401-AESR, 400W AC, exhaust air flow
PSU-401-AISB, 400W AC, intake air flow

Fan Types
FAN-402825-HD, exhaust air flow
FAN-402825-CD, intake air flow

