

S6301-56ST

L2/L3 OOB Management Switch

Enterprises network comprises of many connected devices such as laptops, computers, and access point to meet the employee's demand at work. The S6301-56ST L2/L3 OOB management switch is a high quality and low-cost switch that provides enterprise and small businesses versatile scalability and simple management. With a small form factor and high-density configurations, the S6301-56ST L2/L3 OOB management switch is a white box switch that can be positioned in enterprises due to its versatile connectivity and in data center as a management switch to manage all the OOB ports in the rack.



KEY BENEFITS

- A broad range of Layer 2 and Layer 3 intelligent-enterprise switching solutions
- Top connectivity for small, medium sized or branch-level offices.
- Simple L2/L3 management switch for data center switch and servers.
- Advanced quality of service (QoS) and resiliency

KEY FEATURES

- High density 48 x 1G + 8 x 10G service interfaces
- 130Gbps switching capacity
- Intel® Denverton Dual/Quad-Cores
- Broadcom Trident3-X2 Silicon
- 1 RU small form factor with 440mm depth
- Hot swappable power supplies with 1+1 redundancy support
- Hot swappable fan modules with 1+1 redundancy support

SPECIFICATIONS

PHYSICAL

	♦ 8 x 1G/10G SFP+ ports
	♦ 48 x 10M/100M/1G RJ45 port
	♦ 1 x 100/1000M RJ45 management port
	♦ 1 x RJ45 serial console port
	♦ 1 x USB 2.0 Type-A port
Processor	Standard : Intel Denverton 2-Core @ 1.6GHz Premium : Intel Denverton 4-Core @ 1.6GHz
Memory	Standard : 8GB DDR4 Premium : 8GB DDR4 (Up to 16GB)
Storage	32GB SSD
ASIC	Broadcom Trident3-X2 BCM56277
LED	Power and System status LEDs per unit Link and Activity LEDs per port FAN Status LED per FAN PSU Status LED per PSU
Chassis (WxDxH)	1RU, 440 x 440 x 43.8 mm or 17.32" x 17.32" x 1.72" Weight: 5.62kg or 12.39lbs
Redundancy	Hot swappable, 1+1 redundant PSU Hot swappable, 1+1 redundant Fans

S6301-56ST

Cloud & Data Center Solutions

ENVIRONMENTAL

Power Specs.	AC input: 100 to 240V, 3A DC input: -36 to -72V, 6A Typical power: 64 Watts (no transceiver)
Max. Operating Specs.	Operating temperature: 0°C to 45°C (32°F to 113°F) Operating humidity: 5% to 95% (RH), non-condensing
Max. Non-Operating Specs.	Storage temperature: -40°C to 70°C (-40°F to 158°F) Storage humidity: 5% to 95% (RH), non-condensing

PERFORMANCE

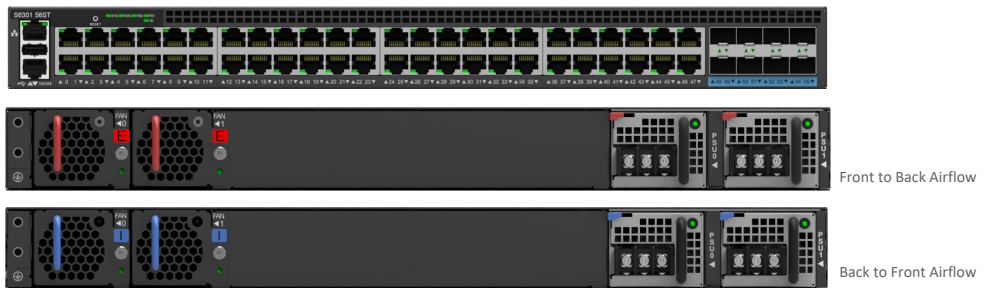
Switching Capacity	130 Gbps
Packet Buffer	4 MB

REGULATORY COMPLIANCE

Safety	UL 62368-1 IEC 62368-1 BSMI	EMC	FCC Part 15, Subpart B, Class A ICES-003, Class A EN 55032, Class A EN 300 386 EN 55035 VCCI CISPR 32, Class A BSMI
Environment	WEEE		

Specifications are subject to change without notice.
Contact our sales team for current configuration options.

S6301-56ST Front and Back Views



ACCESSORIES

Compatible Transceivers Types
10G SFP+ SR, 10G SFP+ LR, 10G SFP+ ER, 10G SFP+ ZR

Available to Order
Power Supply Types
PSU-151-DESR, 150W DC, exhaust air flow
PSU-151-DISB, 150W DC, intake air flow
PSU-151-AESR, 150W AC, exhaust air flow
PSU-151-AISB, 150W AC, intake air flow

Fan Types
FAN-402825-HDN, exhaust air flow
FAN-402825-CDN, intake air flow

